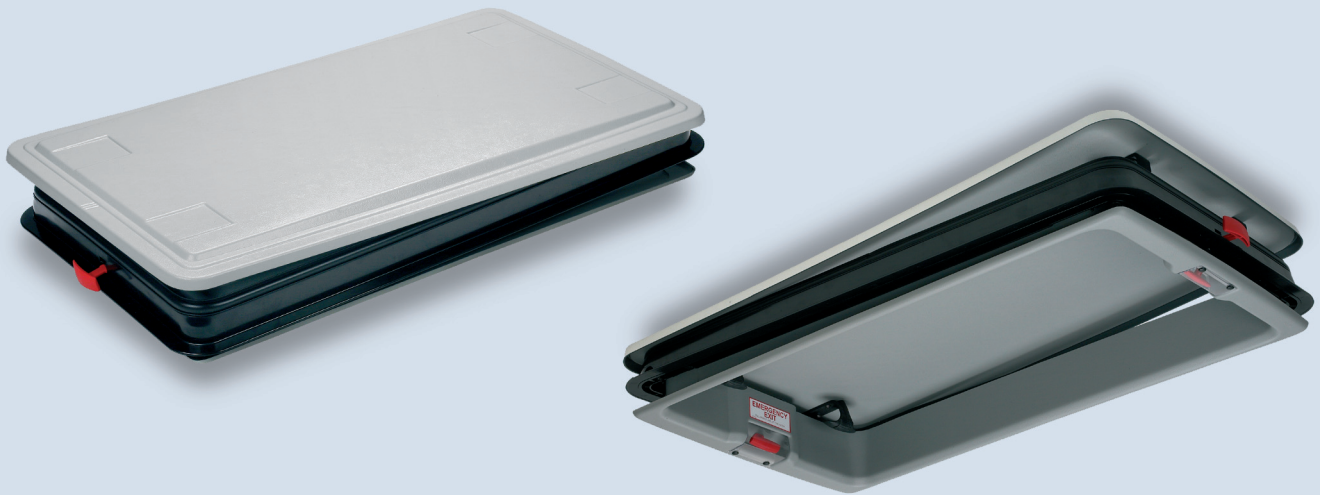


Roof Hatch



## ▶ Roof Hatch MODUS City – Economical, robust, and reliable

Safety and Comfort by Spheros



MODUS City is a reformation of the basic city bus hatch. The member of the new MODUS family is an extremely robust roof hatch with superior ventilation capacity. The hatch is easy and quick to mount by gluing. It has been designed for buses, school buses, coaches, minibuses, and commercial vehicles demanding a very economical and durable hatch with good ventilation characteristics, still without compromising safety.

## ► Roof Hatch MODUS City

The simple but robust mechanisms of MODUS City open in two positions as standard. With the extended handle mechanism the hatch opens in three steps offering a ventilation gap of up to 70 mm.

This 2001/85EC approved emergency hatch is the lightest of its kind with a total mass of only 8,2 kg. The new bondable outer frame enables a quick and precise fitting to ensure a life time water proof functionality for the dome and the emergency exit handle lead in. An extra wide mounting collar with plenty of tolerance (width -12 to +20 mm and length -20 to +20 mm) allows easy mounting in a cut-off size of 530x970. MODUS City hatch is completely maintenance free. Thanks to the dual sheet structure dome the unit has excellent heat and cold isolation.

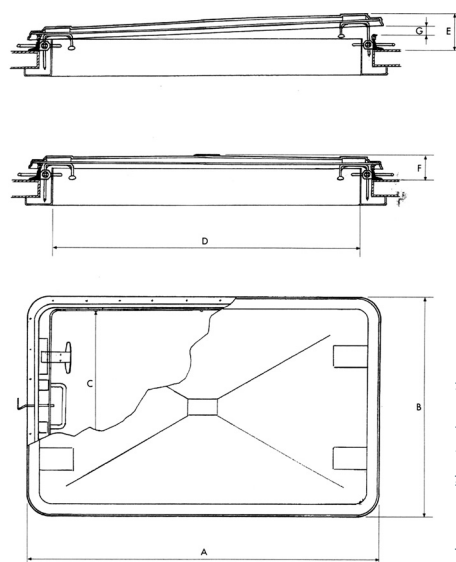
With its classic and neutral design, MODUS City perfectly fits into any bus interior hence making a stylish integrated impression without sticking out. The interior of the hatch comes in either light grey (RAL 7042) or dark grey (RAL 7011) and the dome top in white dual layer on thermoplastics offering an excellent UV protection.

The MODUS City can be mounted in a vehicle with a roof outer radius anywhere between 6000 mm to flat as default and with a roof thickness of 40 mm up to 100 mm depending on the operation handle. When placing an order, please remember to state the roof inner (R1) and outer radius (R2) and thickness of the roof on the long side (T).

### Product Characteristics:

- 2001/85EC emergency exit
- Durable
- Easy and fast mounting
- Great heat and cold isolation
- Maintenance free
- Economical
- Light weight
- Two or three step opening

### Dimensions:



Technical specifications:	Dimensions of Roof opening (mm)	A	B	C	D	E	F	G
		Length of dome	Width of dome	Inner width	Inner length	Height (open)	Height (closed)	Opening
MODUS City	530 x 970	1050	598	510	890	142	92	20 / 50 (/ 70)

08/2008 • Due to continuous product development, we reserve the right to make changes without prior notice.